

# Information About ISENTRESS® Tablets 600mg

Supervising Editor: Dr. Shinichi Oka

[Emeritus Director of AIDS Clinical Center (ACC), National Center for Global Health and Medicine]



# Introduction

This booklet contains information you need to know if you are taking ISENTRESS® Tablets 600mg, including the features of the drug and how to take it, what to do if you forget to take it, and ways to ensure you keep taking it properly.

Be sure to read this information carefully before taking the drug, and always seek medical advice if you have any doubts or concerns about the treatment or the drug.

Supervising Editor: Dr. Shinichi Oka

[Emeritus Director of AIDS Clinical Center (ACC),  
National Center for Global Health and Medicine]



# Contents

<b><u>Introduction</u></b> .....	2
----------------------------------	---

## **About ISENTRESS® Tablets 600mg**

● What type of drug are they? .....	4
● How do I take them? .....	4
● What if I forget to take them? .....	4
● Can I take them with other drugs? .....	5
● Are they safe while pregnant or breastfeeding .....	5
● What are the side effects? .....	5

<b><u>Taking your medication properly</u></b> .....	6~7
---	-----

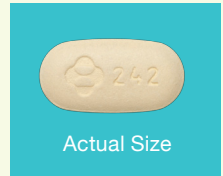
<b><u>HIV and Treating HIV</u></b> .....	8~9
--	-----

<b><u>Other information about dosing</u></b> .....	10
--	----

# About ISENTRESS® Tablets 600mg

## What type of drug are they?

ISENTRESS® Tablets 600mg are the type of drug known as an integrase inhibitor.



Name of product: ISENTRESS® Tablets 600mg  
Name of active ingredient: Raltegravir potassium

## How do I take them?

Takes **two tablets once a day**.

You can take them at any time, **with or without food**.

You can take them at any time, before or after meals or on an empty stomach.

Decide on a time to take them which fits into your daily routine, so that taking them becomes a habit.

## What if I forget to take them?

Take the dose you missed when you notice.

But if it's nearly time for your next dose, don't take the dose you missed, just take the next dose.

Never take a double dose (4 tablets) at one time.



## **Can I take them with other drugs?**

Be sure to tell your doctor or pharmacist if you are currently taking any other medication or supplements.

There are some drugs which require caution if taken with ISENTRESS® Tablets 600mg.

## **Are they safe while pregnant or breastfeeding**

Consult your doctor if you are pregnant or might be pregnant.

If you are taking ISENTRESS® Tablets 600mg, breastfeeding is not advised.

## **What are the side effects?**

You may experience nausea, abdominal pain, headaches, diarrhea, vomiting, and dizziness. These are common side effects.

Seek advice from your doctor or pharmacist if you sense any change in your condition.

# Taking your medication properly

**Make it a habit to take your medication properly so that it continues to work effectively.**

The most important thing for your treatment is to continue taking your medication every day.

**While taking ISENTRESS® Tablets 600mg, try to do the following:**

1

**Try building taking your medication into your daily routine.**

Decide on a time to take your medication which fits into your daily routine so that you don't forget to do it.

Try to build taking your medication into your daily routine by, for example, taking it before breakfast or before you go to bed.

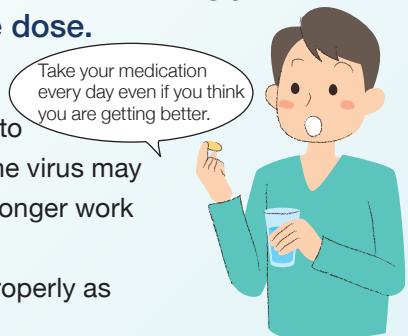


2

**Even if your test results or symptoms get better, don't take it upon yourself to stop taking your medication or change the dose.**

If you take it upon yourself to stop taking your medication or to change the amount you take, the virus may replicate and the drug may no longer work effectively.

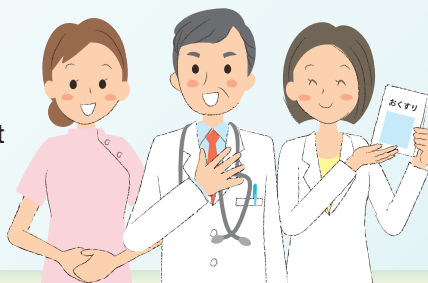
Always take your medication properly as instructed by your doctor.



3

Seek medical advice (from your doctor, pharmacist or nurse) immediately if you experience any worrying symptoms while taking the medication.

Also seek advice from your pharmacist or nurse, etc. if you have any doubts or concerns about taking the medication.



If you have taken ISENTRESS® Tablets 400mg before

**Do not take ISENTRESS® Tablets 400mg as a substitute for ISENTRESS® Tablets 600mg.**

Although ISENTRESS® Tablets 600mg and ISENTRESS® Tablets 400mg contain the same active ingredient, the rate at which the drug is absorbed and the amount of drug absorbed is different. Therefore, even if you still have some previously prescribed ISENTRESS® Tablets 400mg leftover, do not, under any circumstances, take them as a substitute for ISENTRESS® Tablets 600mg.

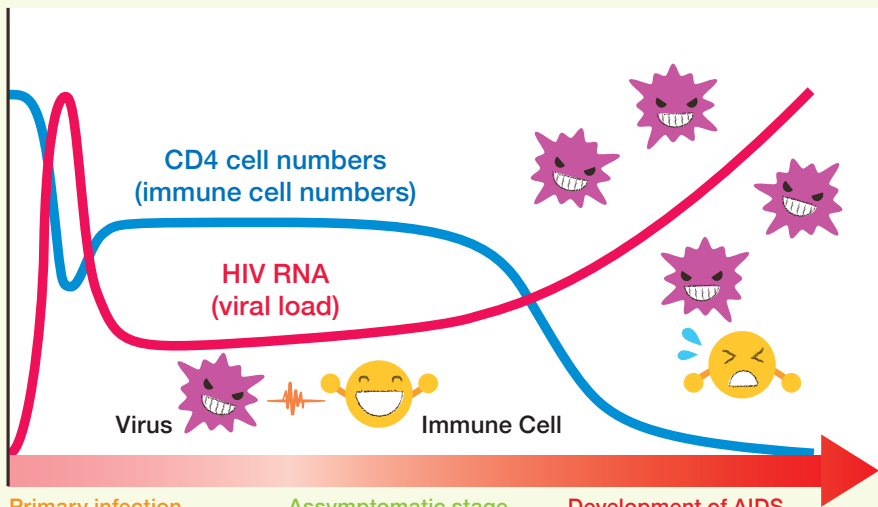
There are concerns that doing so may affect how the drug's efficacy will work on you.

# HIV and Treating HIV

## HIV infection destroys immune cells, leading to impaired immunity.

Without appropriate treatment for HIV infection, the virus gradually destroys CD4 cells (immune cells). The capacity of the immune system is lowered as the destruction of CD4 cells progresses, and the person becomes prone to pathogens that are usually not capable of infecting healthy people, and experience the onset of various diseases. This condition is called acquired immune deficiency syndrome (AIDS).

### The Natural Course of HIV Infection



Primary infection  
(Acute stage)

The virus replicates rapidly and some people will experience flu-like symptoms

Asymptomatic stage

There are no symptoms, but if left untreated, the HIV infection will keep destroying the CD4 cells

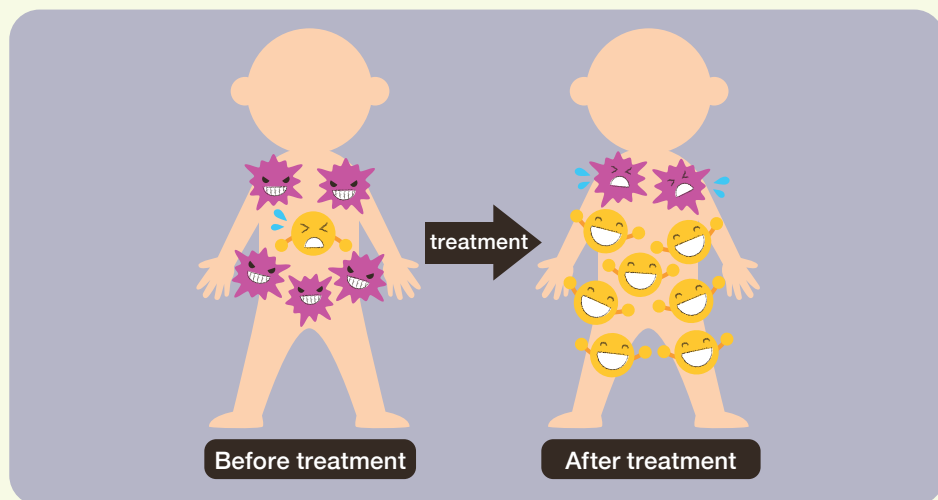
Development of AIDS

The destruction of the CD4 cells leads to impaired immunity and the onset of AIDS



## Treatment with anti-HIV drugs reduces the viral load, allowing the immune system to recover

Treatment involves taking anti-HIV drugs. Anti-HIV drugs control HIV replication, decreasing the amount of virus in the body. Reduction in the amount of virus leads to an increase in CD4 cell numbers and the recovery of the immune system.



## You take a combination of anti-HIV drugs which work in different ways

There are several types of anti-HIV drugs with different ways of working. Treatment involves taking a combination of several anti-HIV drugs which work in different ways.

### Major types of anti-HIV drugs

- Integrase inhibitors
- Protease inhibitors
- Non-nucleoside reverse transcriptase inhibitors
- Nucleoside reverse transcriptase inhibitors

# Other information about dosing

## How to open the cap

The cap for ISENTRESS® Tablets 600 mg can be opened by pushing and turning (push & turn method). Please open it according to the instructions below.

### How to open the bottle

- ① While pushing the cap,
- ② Turn it to the left.



## Websites with HIV information

If you like to know more about HIV infection, medication and treatment, refer to the following websites.

- AIDS Clinical Center, National Center for Global Health and Medicine  
<https://www.acc.ncgm.go.jp>
- Advanced Medicine Development Center for HIV/AIDS Infection, National Hospital Organization Osaka National Hospital  
<https://osaka.hosp.go.jp/department/khac/index.html>
- AIDS Prevention Information Network  
<https://api-net.jfap.or.jp>

Notes

.....

.....

.....

.....

.....

.....

.....

.....

.....

.....

.....

.....

.....

.....

.....

.....

.....

.....

.....

.....

.....



●Hospital Name